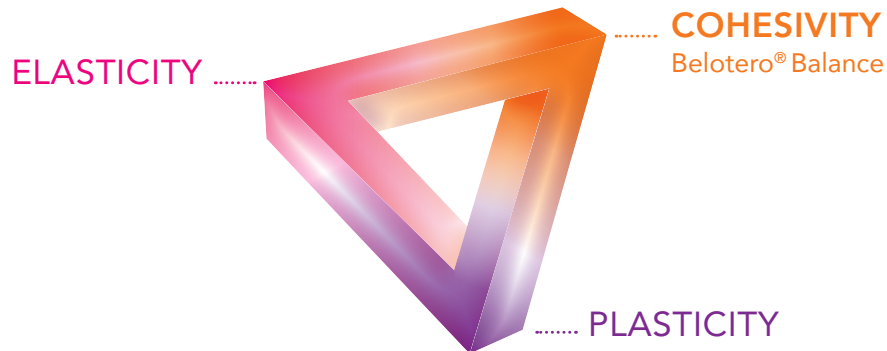


OPTIMAL  
**SKIN**  
INTEGRATION

Belotero<sup>®</sup>  
Balance

BALANCE

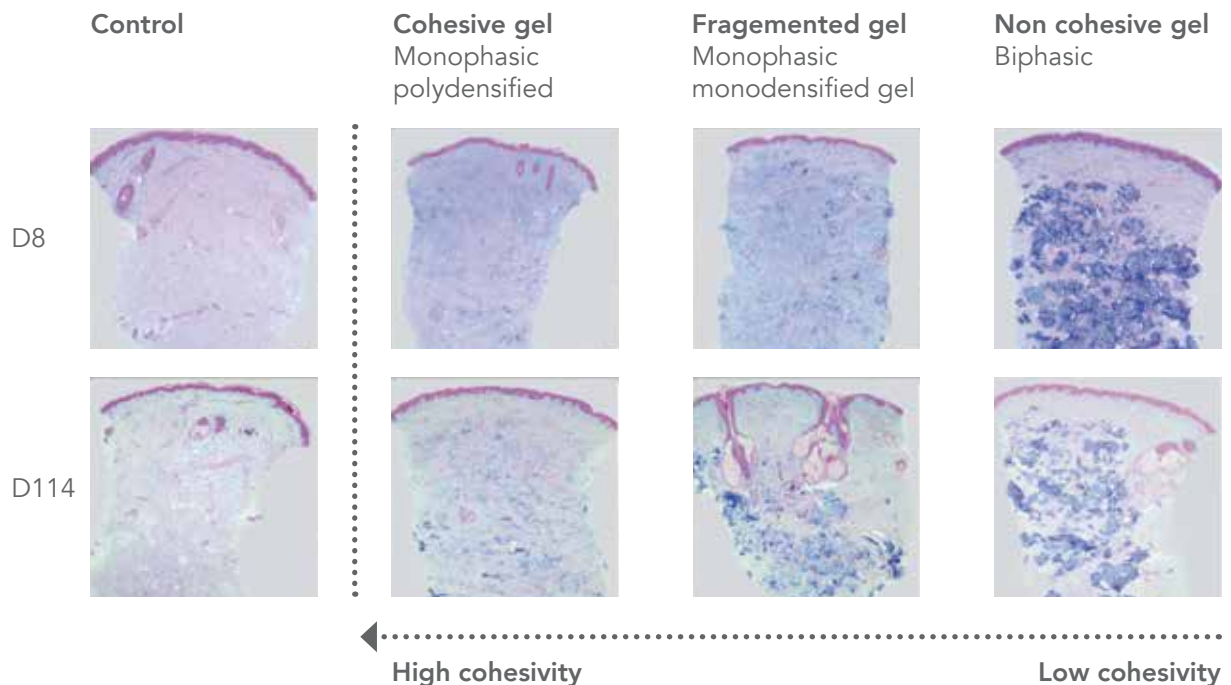
# Belotero® Balance\* becomes a part of your patients due to its seamless integration



The cohesivity of Belotero® Balance enables optimal skin integration and prevents the risk of gel migration

- Belotero® is seen to occupy the full thickness of the reticular dermis and is evenly distributed<sup>11</sup>
- No dermal trauma or structural alteration<sup>11</sup>

Cohesivity enables seamless dermal integration<sup>12</sup>



Blue areas on the images correspond to HA  
 Alcian blue staining 8 days after injection of HA fillers  
 Alcian blue staining 114 days after injection of HA fillers

\* Belotero® Balance is equivalent to Belotero® Basic as well as equivalent to Esthélis® Basic, a registered trademark of Anteis S.A.  
<sup>11</sup> Tran C, Carraux P, Micheels P, Kaya G, Salomon D: In vivo Bio-Integration of Three Hyaluronic Acid Fillers in Human Skin: A Histological Study. In press, Dermatology DOI: 10.1159/000354384  
<sup>12</sup> Van Gieson elastin staining

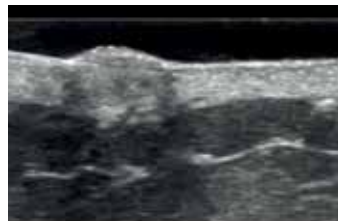
# Belotero® Balance – Good safety and tolerability

## Optimal skin integration without side effects

Belotero® ultrasonography images show a homogenous papule which is as dense as the surrounding tissue after injection into the superficial dermis.<sup>13</sup>



Biphasic gel



Monophasic monodensified gels



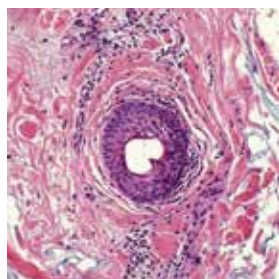
Monophasic polydensified gel

In contrast Restylane® and Juvéderm® showed a higher degree of echoes, opaqueness, and production of a cone of shadow underneath the injected papules.

## Belotero® has no significant local inflammatory reaction<sup>14</sup>

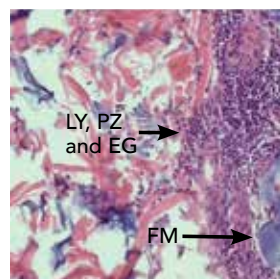
Belotero® showed an absence of an inflammatory reaction following injection intradermally.<sup>14</sup>

## Histological slides 30 days after injection



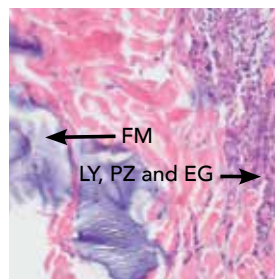
Juvéderm® 30HV

- Slight to moderate degree of chronic inflammation
- Subepidermal and perivascular increased number of lymphocytes, also plasma cells and several granulocytes



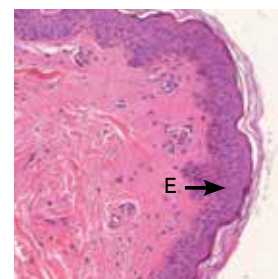
Teosyal® Deep Lines

- Severe chronic inflammation
- Dense infiltrate of inflammatory cells



Restylane® Perlane®

- Intense chronic inflammation,
- Heavy infiltration of lymphocytes, plasma cells and eosinophil granulocytes



Belotero® Balance

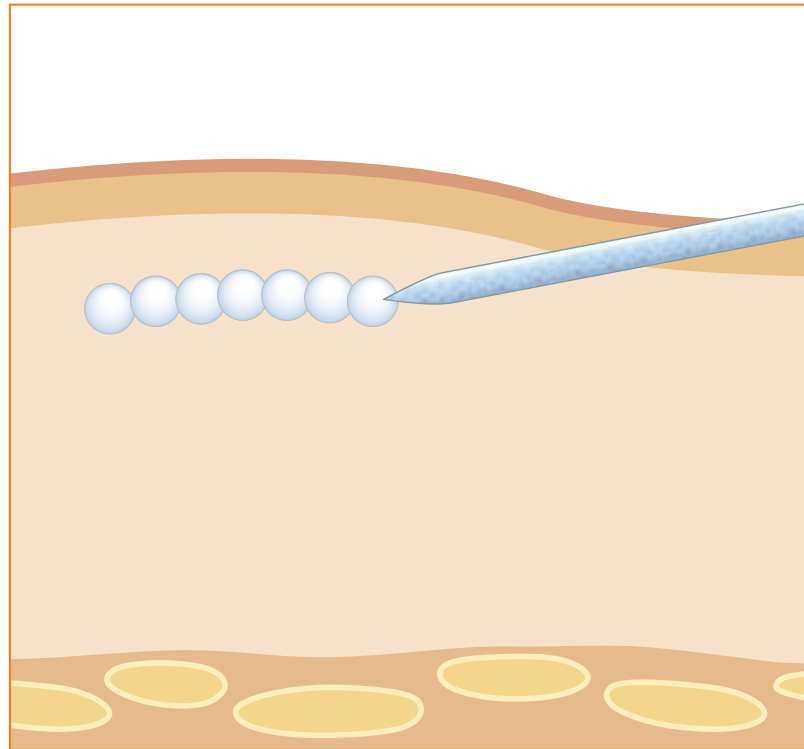
- Histomorphological normal finding free of inflammation unremarkable immune reaction

LY lymphocytes, PZ plasma cells, EG eosinophilic granulocytes, FM foreign material, E epidermis

<sup>13</sup> Micheels P et al., Dermatol Surg 2012;38:1162–1169  
 Pictures: Courtesy to Dr Micheels and Dr Besse  
<sup>14</sup> Taufiq A.Z. et al., J Ästhet Chir 2009 2:29 – 36.

## Ideal for blanching

Belotero® is the only commercially available HA filler that can be administered with the blanching technique in the superficial dermis<sup>15</sup>



The multipuncture deposition of the cohesive polydensified matrix hyaluronic acid gel for the blanching technique.

**Important: 1.5 to 2 mm needle insertion**

- Injection in superficial dermis
- Injection angle of 10–12 degrees
- Multiple punctures at intervals of 0.5 cm

“Belotero® is suitable for very superficial intradermal injection using the blanching technique with little to no risk of visible product or the Tyndall effect.”

<sup>15</sup> Micheels P. et al. A Blanching Technique for Intradermal Injection of the Hyaluronic Acid Belotero. Plastic and Reconstructive Surgery. 2013; October Supplement.



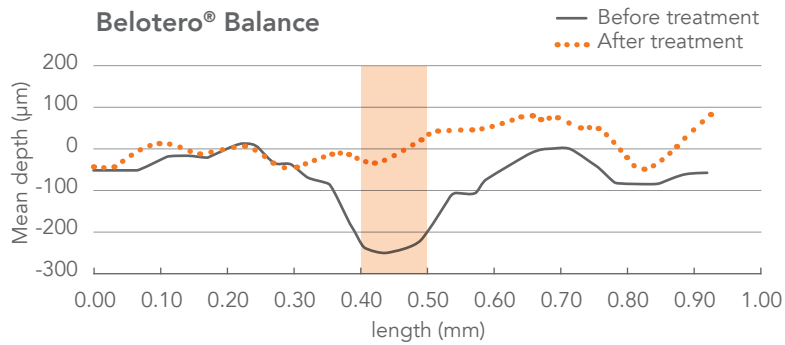
# Belotero® Balance offers smooth support of the superficial and mid dermis

The Split-Face Evenness Study showed significantly greater improvement in evenness\* of the nasolabial folds area of Belotero® Balance compared with Restylane® ( $p < 0.0001$ ).<sup>16</sup>



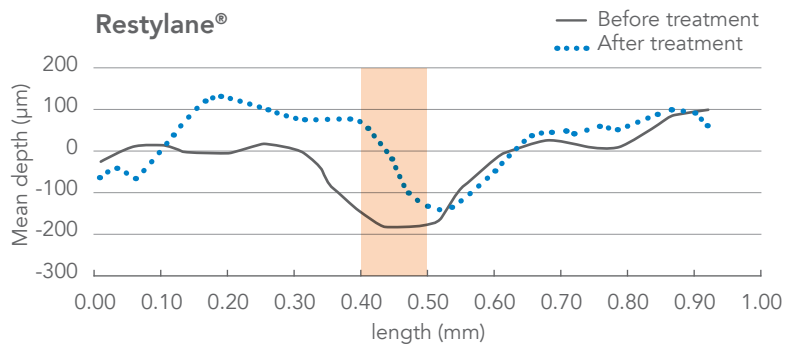
\*Evenness was measured by the mean residual depth of the nasolabial target area relative to the skin surface post treatment.

## Two-dimensional surface profiles before and 4 weeks after treatment



The total waviness of the nasolabial target area, i.e. depth and evenness was measured from the surface of the skin. Positive figures implied "bumps" in the skin and negative figures implied lines, wrinkles and folds in the skin.

At week 4, the Belotero® treatment achieved a reduction of 109.5 µm (from 248.8 µm to 139.4 µm) in the mean depth of the nasolabial fold, compared to a reduction of 71.8 µm in the Restylane® treated side.



<sup>16</sup> Prager W, Steinkraus V. A prospective, rater-blind, randomized comparison of the effectiveness and tolerability of Belotero Basic versus Restylane for correction of nasolabial folds. Eur J Dermatol 2010; 20 (6): 748-52.

## Belotero® Balance – Tried and tested

The safety of Belotero® Balance has been evaluated in 8 clinical studies<sup>17-24</sup>

In general the following were observed:

- Mild to moderate treatment-related adverse events
- No treatment-related serious adverse events
- Minimal inflammatory response
- Proven tolerability over 18 months
- Patient and physician satisfaction
- Long-term safety and patient satisfaction
- Belotero® is safe in Fitzpatrick skin types IV – VI<sup>21</sup>
- No reports of severe adverse events

### Tolerability over 18 months<sup>23</sup>

In a long-term open-label extension study for correction of nasolabial folds, Belotero® was well tolerated when repeat injections were given over an 18-month follow-up period.

Injection site bruising was the only adverse event that was considered to be related to Belotero®.

### Patients and physicians are satisfied with Belotero®<sup>17</sup>

A clinical study in 114 patients with nasolabial folds demonstrated that 81 % of patients were treated successfully for 24 weeks with the effect persisting for 36 weeks in 66% of the patients.

There was good or very good tolerability in 109 out of the 114 patients.

98% of all patients and 90% of the examiners rated the treatment success as good or very good.

<sup>17</sup> Reinmüller J et al, Dermatol News 2007; issue 11: 2-3.

<sup>18</sup> Taufig AZ, et al, J Ästhetische Chirurgie 2009; 2: 29-36.

<sup>19</sup> Prager W et al, Dermatol Surg 2012;38:1143-1150.

<sup>20</sup> Micheels P, J of cosm surg & med, VOL 4, No. 3 2009.

<sup>21</sup> Downie JP et al, Plast Reconstr Surg, 132; 41S; Oct, Suppl 2013.

<sup>22</sup> Narins RS et al, Dermatol Surg, 2010;36:730-740.

<sup>23</sup> Narins RS et al, Dermatol Surg, 2010; 36:1800-1808.

<sup>24</sup> Kühne U et al, J Drugs Dermatol 2012;11:1032-1035.

# Predictable results with Belotero® Balance\*

Nasolabial wrinkle



Before

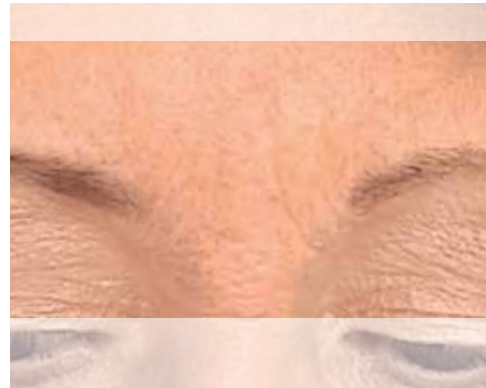


After

Glabella wrinkle



Before



After

Nasolabial wrinkle



Before



After

\* Courtesy of Dres Imhof/Kühne

## Predictable results with Belotero® Balance

Nasolabial wrinkle \*1



Before



After

Nasolabial wrinkle \*2



Before



After



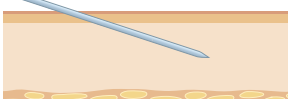
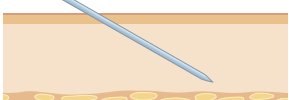
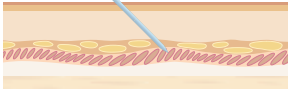
\*1 Courtesy of Dr Reinmüller  
\*2 Courtesy of Merz Pharma UK Ltd.





## The Belotero® family – It's a part of you



Belotero® product	Indications	HA concentration	Needle size	Injection site and angle
<b>HYDRO</b>	Skin rehydration, e.g.: face, neck, décolletage, back of hands	18 mg/1ml	30 G	Dermal/epidermal junction (nappage technique) or superficial dermis (micro-papular technique) 
<b>SOFT</b>	Correction of fine lines, e.g.: crow's feet, perioral lines, fine forehead lines	20 mg/1ml	30 G	Superficial dermis Approx 10° 
<b>BALANCE</b>	Correction of moderate lines, e.g.: moderate nasolabial wrinkle, glabellar lines, moderate perioral wrinkles, lip contouring, philtrum	22.5 mg/1ml	27 G	Superficial to mid dermis Approx 15° 
<b>INTENSE</b>	Correction of deeper lines, e.g.: severe nasolabial fold, lip volume, oral commissures, marionette folds	25.5 mg/1ml	27 G	Mid and deep dermis Approx 30° 
<b>VOLUME</b>	Restoration of facial volumes, e.g.: cheeks, temples, facial volume loss	26 mg/1ml	30 G + 27 G Needle  27 G Cannula	Deep dermis, subcutaneously 

# MERZ AESTHETICS



Belotero® is a registered trademark of Merz Pharma GmbH & Co. KGaA.  
Merz Pharmaceuticals GmbH, Eckenheimer Landstraße 100  
60318 Frankfurt am Main, Germany  
[www.merzaesthetics.com](http://www.merzaesthetics.com)

Belotero® is manufactured by Anteis S.A.  
18, Chemin des Aulx, 1228 Plan-les-Ouates, Geneva, Switzerland

